

Lightroom Tips:

Module picker - rt clk by modules

Module bar control - rt clk on small arrow
- same with side panels

Side panel config - rt clk near panel name
recommend "Solo Mode"

Hide sides - Tab

hide most panels - Shift Tab

Tool bar => t

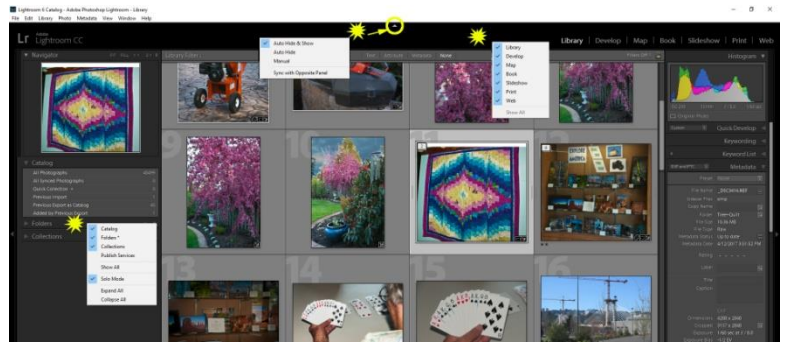
config the tool bar - rt clk on small arrow

Full screen mode => f

cycles thru screen modes => Shift - f

Lights out +> l (lower case L) - regardless of image size, i.e. grid or large image

10 min. video: <https://helpx.adobe.com/lightroom/how-to/lightroom-work-panels-lights-out.html>



Lightroom Tips:

Module picker - rt clk by modules

Module bar control - rt clk on small arrow
- same with side panels

Side panel config - rt clk near panel name
recommend "Solo Mode"

Hide sides - Tab

hide most panels - Shift Tab

Tool bar => t

config the tool bar - rt clk on small arrow

Full screen mode => f

cycles thru screen modes => Shift - f

Lights out +> l (lower case L) - regardless of image size, i.e. grid or large image

10 min. video: <https://helpx.adobe.com/lightroom/how-to/lightroom-work-panels-lights-out.html>

